



Graduate Programs in Ethology, Behavior and Neuroscience

BEHAVIORAL AND NEURAL
PLASTICITY

SEXUAL SELECTION

ENDOCRINOLOGY

LEARNING AND MEMORY

NEURAL DEVELOPMENT

NEURAL CIRCUITS

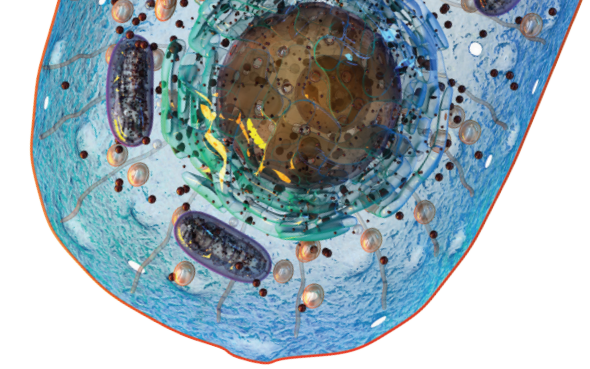
Dr. Gregg Roman,
Department Chair

Dr. Colin Jackson,
Associate Chair for Graduate Studies

University of Mississippi
Department of Biology
214 Shoemaker Hall
P.O. Box 1848
University, MS
38677-1848

6 6 2 . 9 1 5 . 7 2 0 3

biology@olemiss.edu



**THE UNIVERSITY
OF MISSISSIPPI
DEPARTMENT
OF BIOLOGY**

PhD and MS Degrees



The University of Mississippi
**COLLEGE OF
LIBERAL ARTS**



**THE UNIVERSITY of
MISSISSIPPI**

The University of Mississippi does not discriminate against any student protected by law based on race, color, religion, sex, national origin, disability, age, veteran status, sexual orientation, or genetic information.

biology.olemiss.edu





Graduate Programs in Ecology, Biodiversity and Evolution

PHYLOGEOGRAPHY
POPULATION GENETICS
COMMUNITY ASSEMBLY
MICROBIAL ECOLOGY
AQUATIC AND
WETLAND ECOLOGY
RESTORATION ECOLOGY
CONSERVATION BIOLOGY



Graduate Programs in Symbiosis and Species Interactions

MICROBIOMES
SYMBIOSIS EVOLUTION
HOST-PARASITE COEVOLUTION
FOOD WEBS
CORAL-ALGAL PHYSIOLOGY
PLANT-FUNGAL
INTERACTIONS
INVASIVE SPECIES
DISEASE BIOLOGY



Graduate Programs in Cell Biology, Genetics and Genomics



ANIMAL, PLANT,
AND MICROBIAL
DEVELOPMENT
SIGNAL TRANSDUCTION
CELLULAR
DIFFERENTIATION
MEMBRANE TRAFFICKING
MITOCHONDRIAL
PHYSIOLOGY
MICROBIOLOGY
BEHAVIORAL
GENETICS
BIOINFORMATICS

